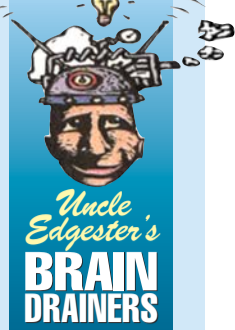
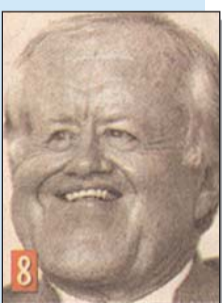
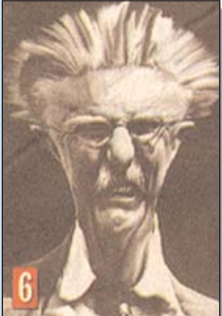
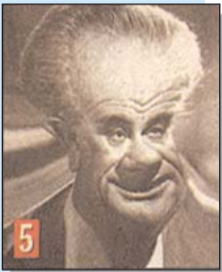
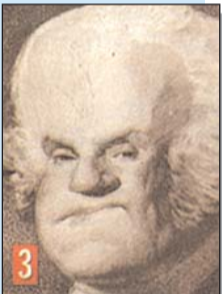


THE EDGE



We will now administer the oaf of office

It's Inauguration Day — and while President Clinton's swearing in, you'll be swearing you recognize these digitally distorted presidential portraits as you mutter: "What the *Hail* did they do to the Chief?" So who's who?



THE EDGE

Solutions to the presidential portrait quiz on Page C1.

1



RONALD REAGAN

2



JOHN KENNEDY

3



GEORGE WASHINGTON

4



RICHARD NIXON

5



LYNDON JOHNSON

6



TEDDY ROOSEVELT

7



DWIGHT EISENHOWER

8



JIMMY CARTER